

# 2021 PARK'S FACT SHEET

## BUDGET FOR 2021-2022

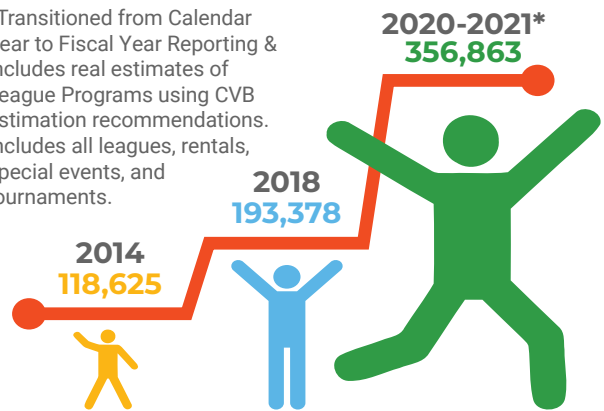


## PROPERTIES MAINTAINED



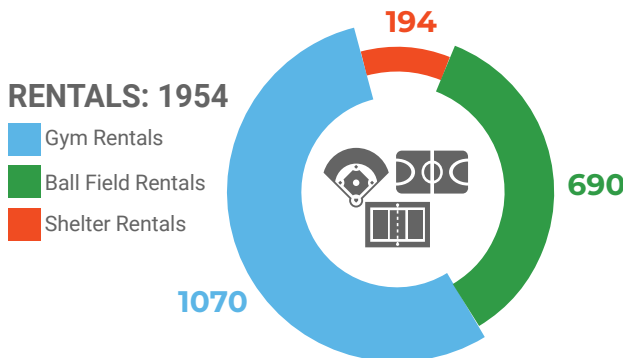
## PARTICIPATION COMPARISON

\*Transitioned from Calendar Year to Fiscal Year Reporting & includes real estimates of League Programs using CVB estimation recommendations. Includes all leagues, rentals, special events, and tournaments.



## 2020-2021 PARTICIPATION STATS

Rentals/Events were down from 2018 due to COVID.

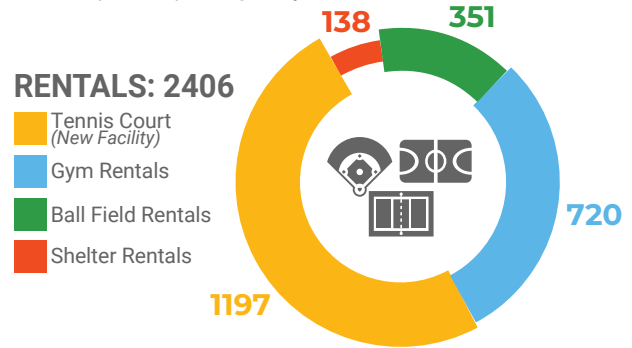


## SPECIAL EVENTS & TOURNAMENTS: 48



## 2021-2022 PARTICIPATION STATS

First six months of fiscal year (July-Dec. 2021), we anticipate surpassing last year's totals.



## SPECIAL EVENTS & TOURNAMENTS: 41



## EVENTS SCHEDULED FOR 2022

(at time of this printing)

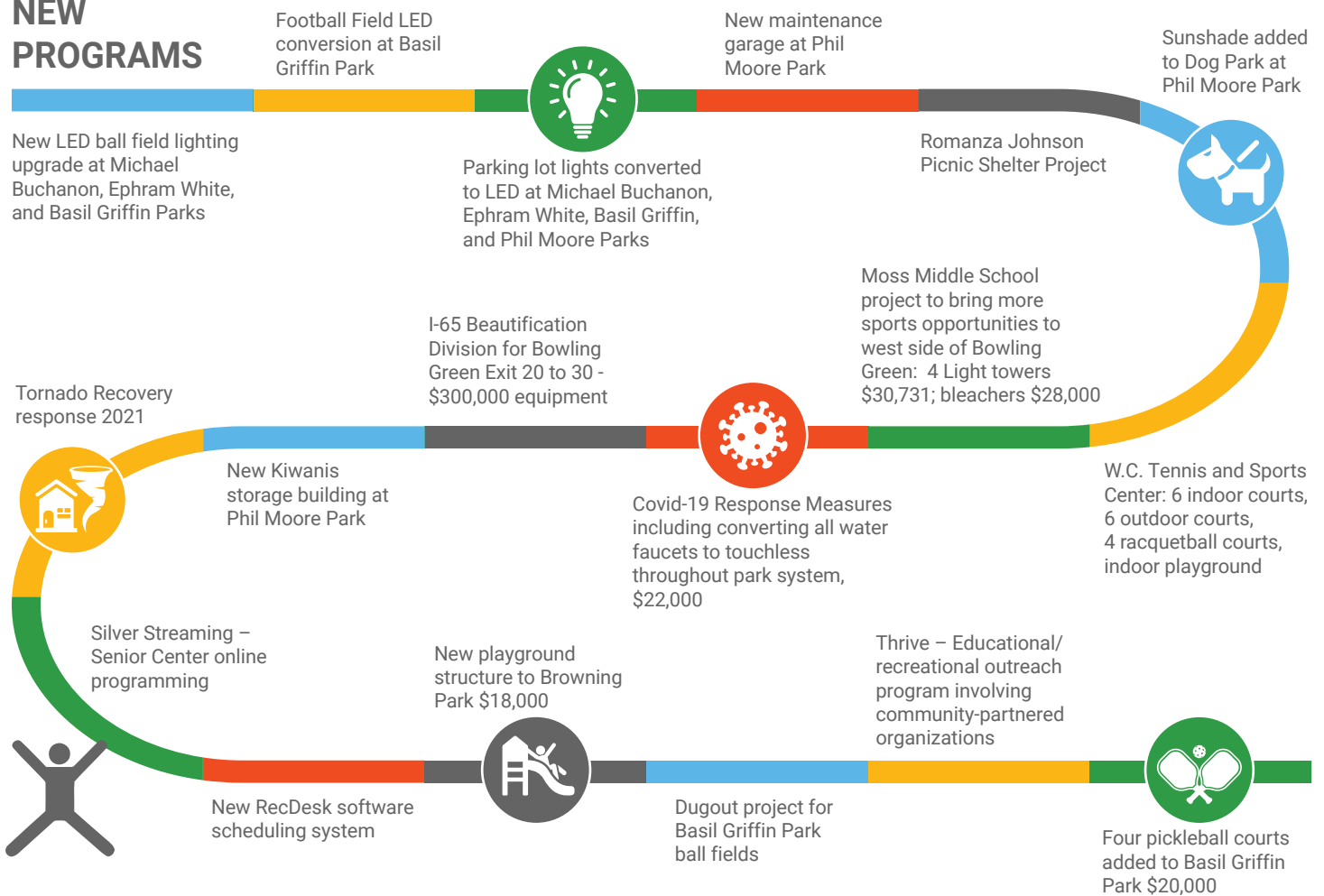


**CHECK OUR WEBSITE**  
 for additional ongoing and ever-changing improvements to the Warren County Parks:  
[warrencountyky.gov](http://warrencountyky.gov)

Check out back page for more info!

# 2021 PARK'S FACT SHEET *(continued)*

## NEW PROGRAMS



## WALKING TRAILS IN SYSTEM



## OTHER FACTS



Check our website for additional ongoing and ever-changing improvements to the Warren County Parks: [warrencountyky.gov](http://warrencountyky.gov)

